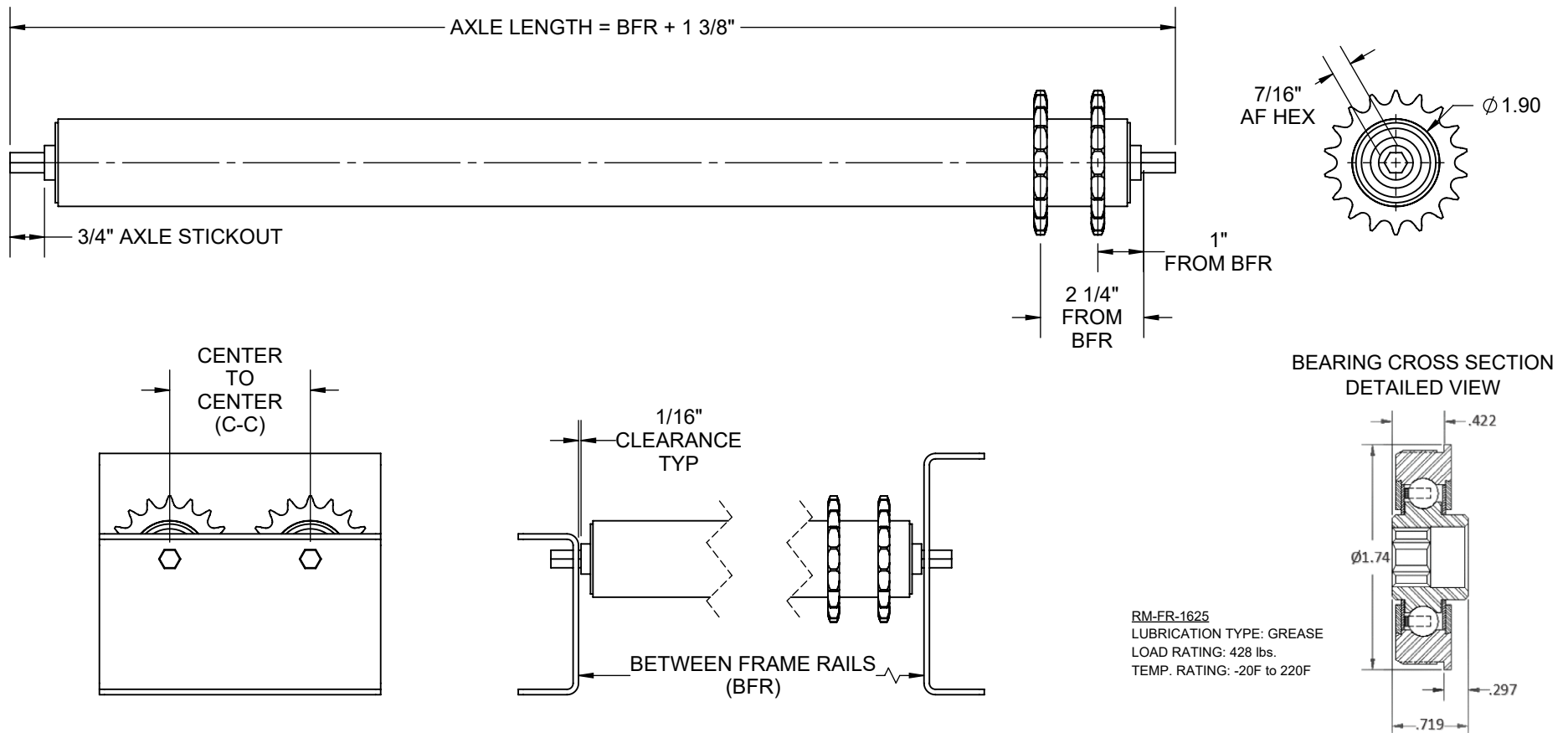


**SPECIFICATIONS**

<b>BETWEEN FRAME RAILS</b>	6" TO 54"
<b>ROLL CONSTRUCTION</b>	STRUCTURAL ROUND TUBE, 1.9" DIAMETER, 0.145" WALL STEEL
<b>BEARING TYPE</b>	SEMI-PRECISION, CARBON STEEL HOUSING, GREASED, 7/16" HEX
<b>AXLE RETENTION</b>	STANDARD - SPRING LOADED ONE SIDE. OPTIONAL: COTTER PIN OR FIXED AXLE
<b>ROLLER SURFACE</b>	STANDARD CARBON STEEL
<b>STANDARD SPROCKETS</b>	40A18
<b>MINIMUM C-C</b>	3 1/2"

AVAILABLE OPTIONAL FEATURES:

1. CUSTOM AXLE EXTENSION FROM BFR
2. CUSTOM SPROCKETS SPACING
3. NON STANDARD SPROCKETS
4. PVC COVER



REV

0

**Model: CR19145HD - 40A18X1.9**

