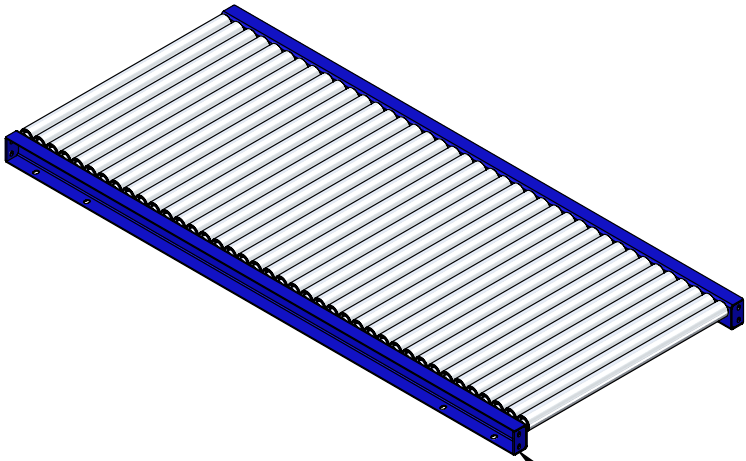
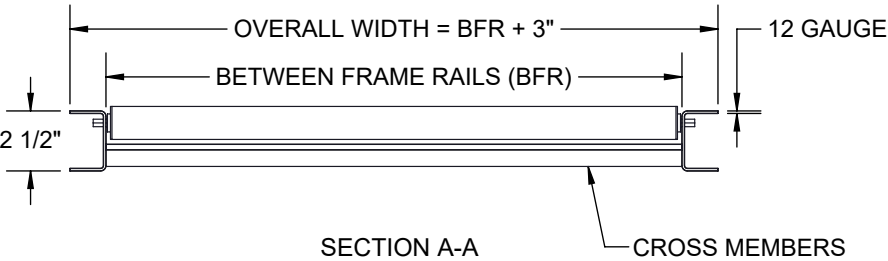
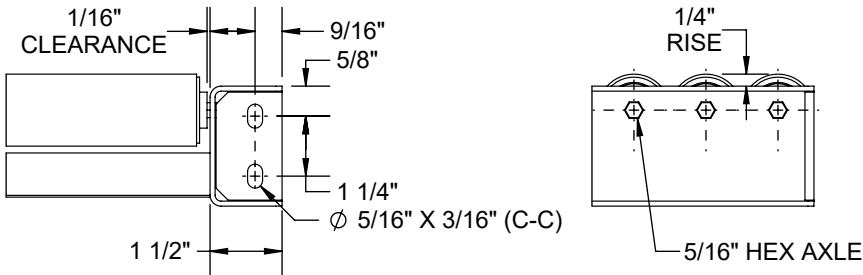
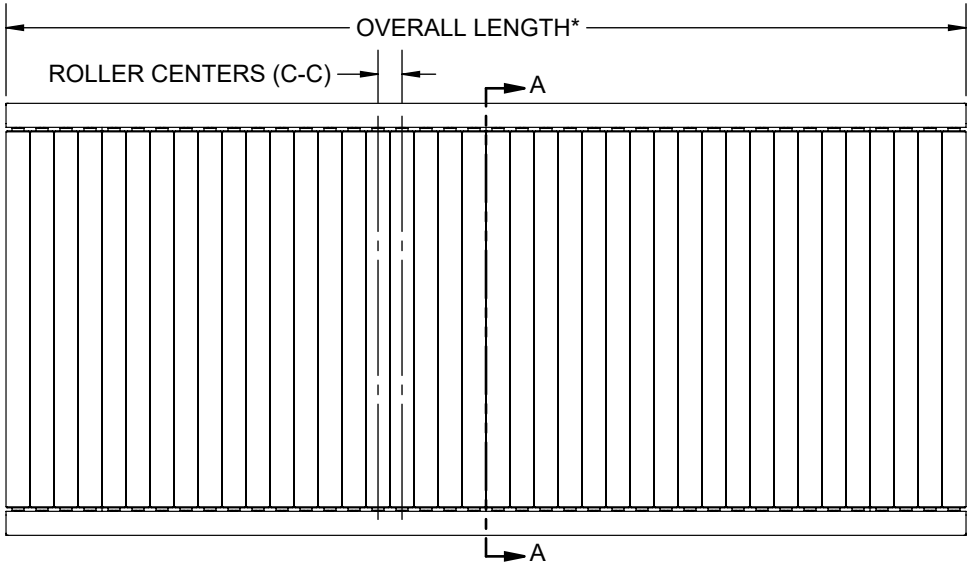


SPECIFICATIONS	
OVERALL LENGTH	12" TO 120"
OVERALL WIDTH	7" TO 27"
ROLLER CENTERS	2", 3", 4 1/2", 6"
BETWEEN FRAME RAILS	4" TO 24"
ROLLERS	1 1/2" DIA X 0.065" WALL ALUMINUM - 5/16" HEX AXLE
BEARINGS	NON-PRECISION, OILED
SIDE CHANNELS	2 1/2" X 1 1/2" X 12 GA
CROSS MEMBERS	1 1/4" X 1 1/4" X 1/8"
FRAME MATERIAL	PLAIN STEEL
FINISH	INDUSTRIAL ENAMEL



BUTT COUPLING



NOTE:
 *OVERALL LENGTH MUST BE DIVISIBLE BY SELECTED C-C.(NOT APPLICABLE FOR 4 1/2" C-C)

FOR 4 1/2" C-C, THE OVERALL LENGTH SUBTRACTED BY 3" MUST BE DIVISIBLE BY 4 1/2".

REV	0	Model: GR – 15065 Gravity Roller Conveyor
-----	---	--

