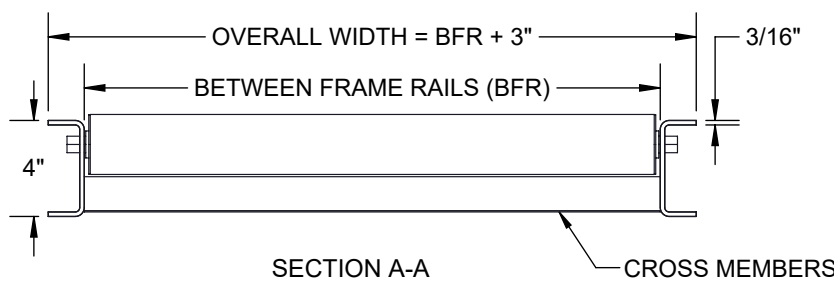
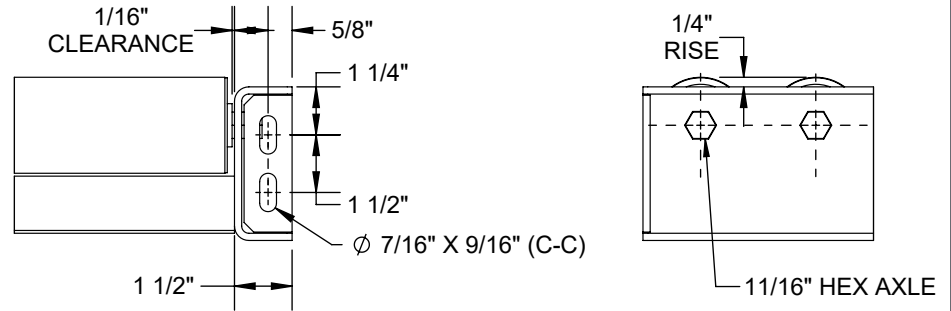
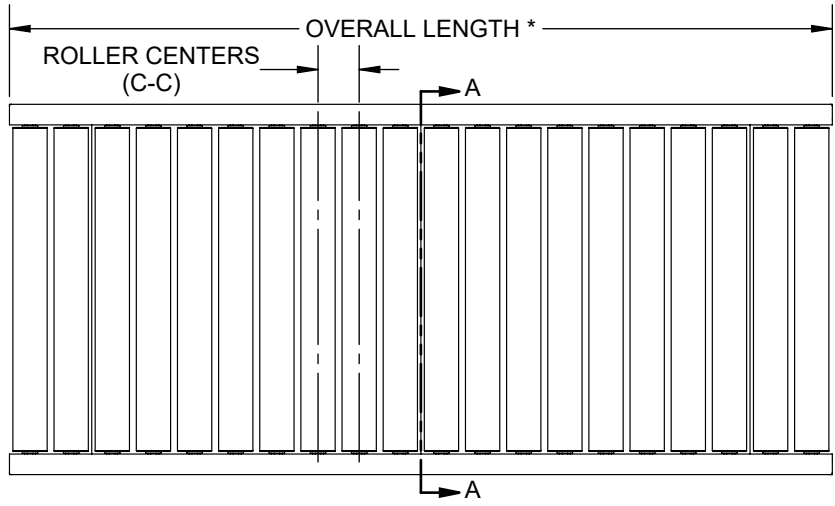
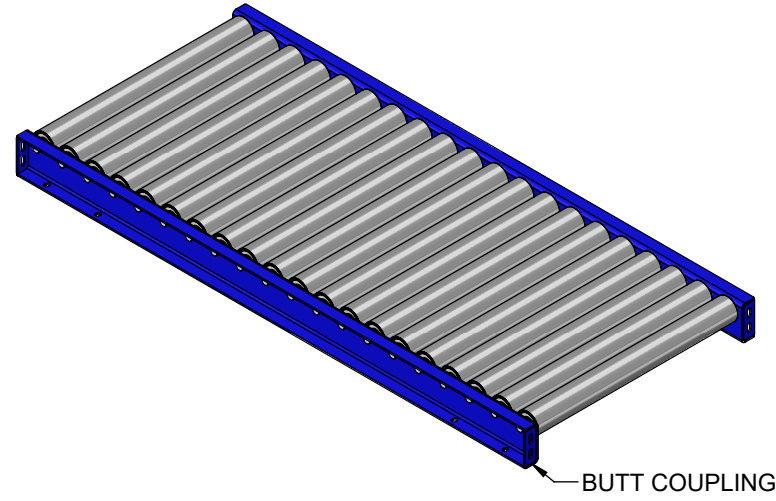


| SPECIFICATIONS | |
|---------------------|--|
| OVERALL LENGTH | 12" TO 120" |
| OVERALL WIDTH | 11" TO 75" |
| ROLLER CENTERS | 3", 4", 4 1/2", 6", 9", 12" |
| BETWEEN FRAME RAILS | 8" TO 72" |
| ROLLERS | 2 1/2" DIA X 11 GA STEEL - 11/16" HEX AXLE |
| BEARINGS | PRECISION, GREASED |
| SIDE CHANNELS | 4" X 1 1/2" X 3/16" |
| CROSS MEMBERS | 2" X 2" X 0.25" |
| FRAME MATERIAL | PLAIN STEEL |
| FINISH | INDUSTRIAL ENAMEL |



NOTE:
 *OVERALL LENGTH MUST BE DIVISIBLE BY SELECTED C-C.(NOT APPLICABLE FOR 4 1/2" C-C)

FOR 4 1/2" C-C, THE OVERALL LENGTH SUBTRACTED BY 3" MUST BE DIVISIBLE BY 4 1/2".

| | | |
|-----|---|---|
| REV | 0 | Model: GR – 2511 Gravity Roller Conveyor |
|-----|---|---|

