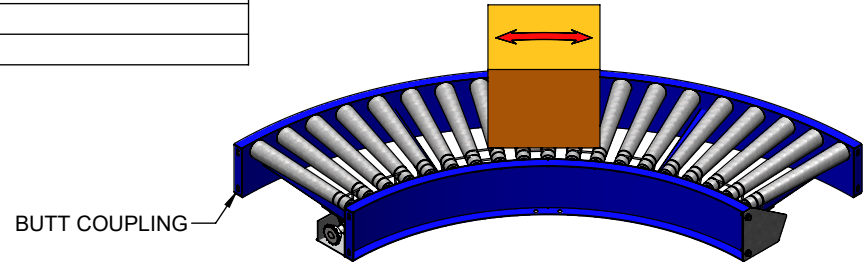


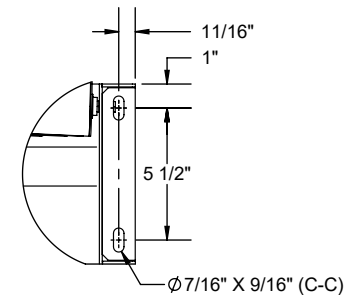
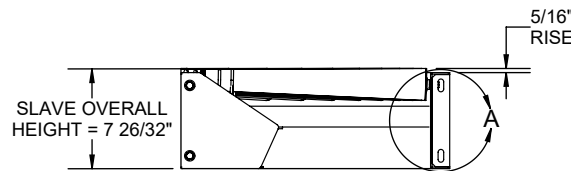
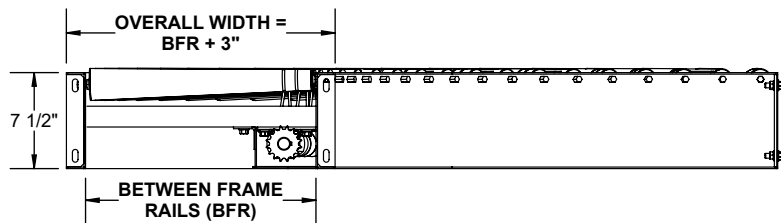
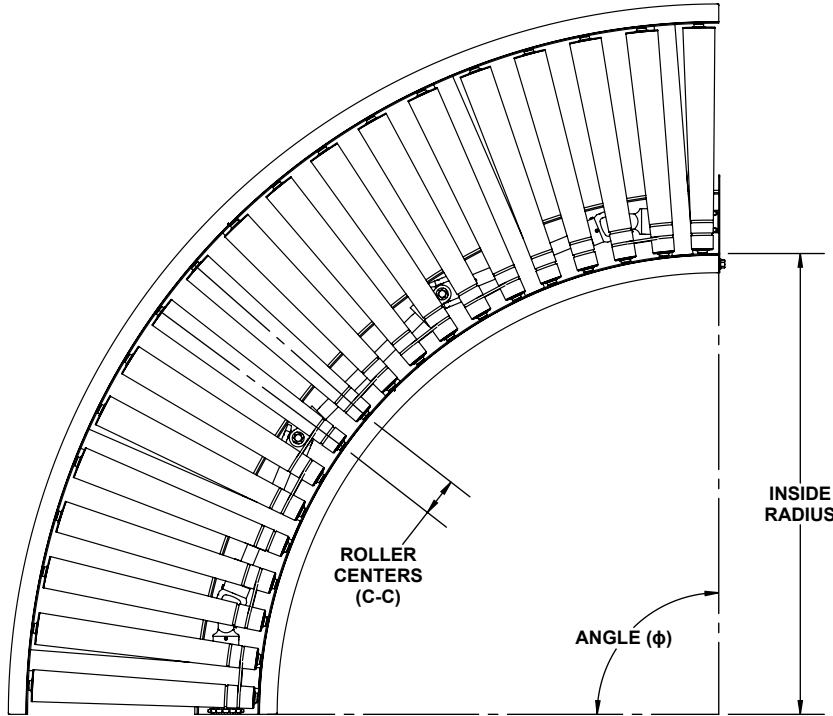
SPECIFICATIONS				
ANGLE (ϕ)	90°	60°	45°	30°
OVERALL WIDTH	18", 21", 24", 27", 30", 39"			
INSIDE RADIUS	36"			
ROLLER CENTERS (C-C)	3"			
BETWEEN FRAME RAILS	15", 18", 21", 24", 27", 36"			
CONVEYOR SPEED (FPM)	30 TO 120 (INCREMENT OF 10)*			
ROLLERS	1.69" TO 2 1/2" DIA X 16 GA GALVANIZED STEEL - 7/16" HEX AXLE			
BEARINGS	PRECISION, GREASED			
SIDE CHANNELS	7 1/2" X 1 1/2" X 11 GA			

NOTE: *CONVEYOR SPEED IS BASED ON SELECTED DRIVE CONVEYOR MOTOR.

(TAPERED ROLLER IS USED TO MAINTAIN TRANSFERRED PACKAGE ORIENTATION)



LINE SHAFT - SLAVE CURVED CONVEYOR

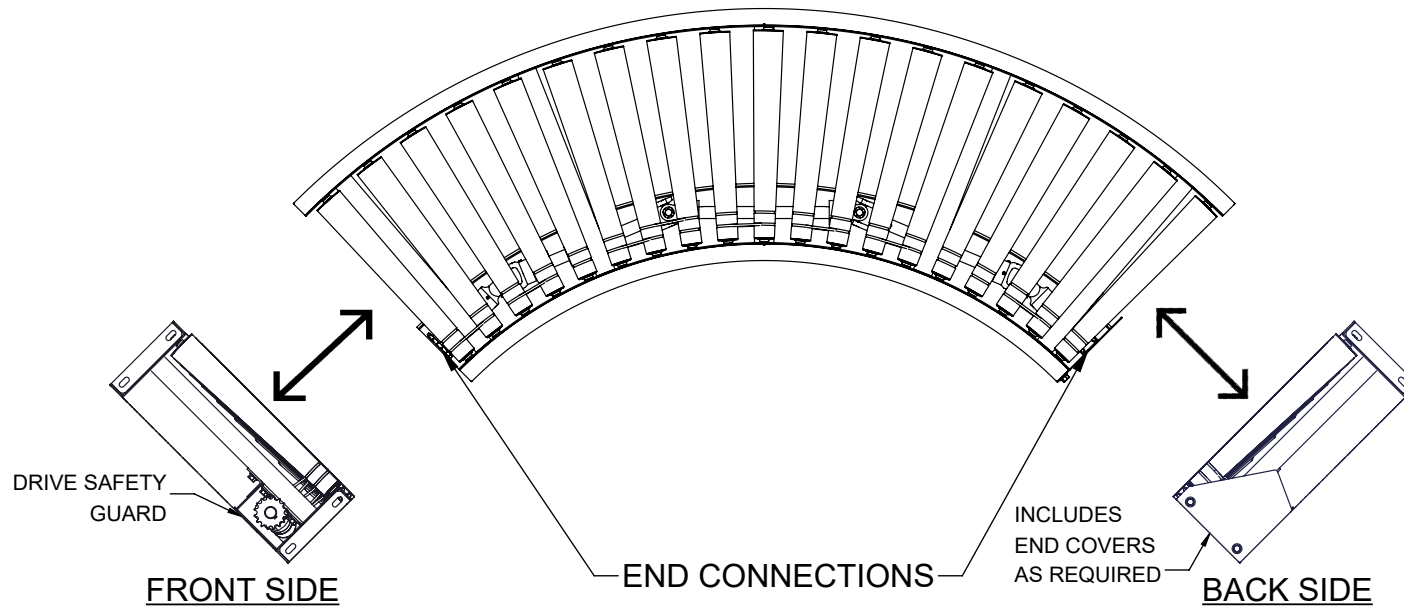


DETAIL A

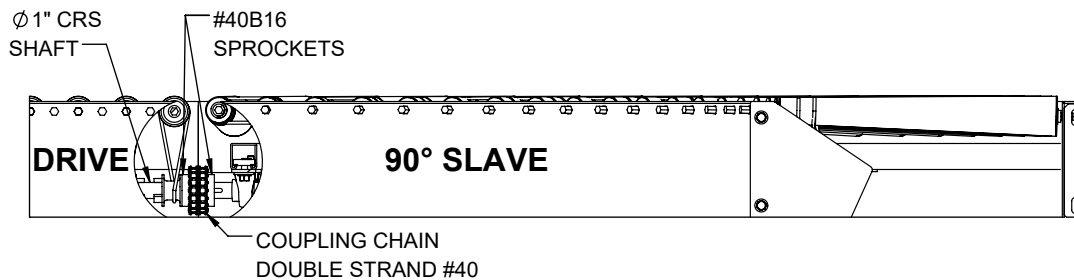
REV	0	Model: LSC - T16925P Line Shaft Curve Conveyor
-----	---	---



1.0 SLAVE CONVEYOR

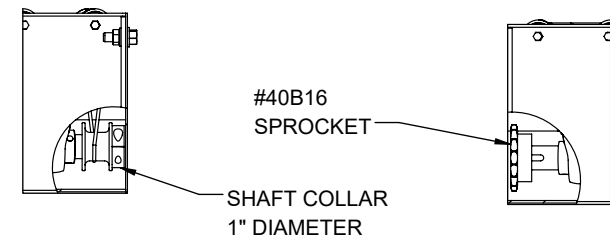


2.0 DRIVE SHAFT



LINE SHAFT CONVEYOR COUPLING

2.1 END CONNECTIONS



CONFIGURATION	PARTS ON SHAFT ENDS
A	SPROCKETS ON BOTH SIDES
B	COLLAR ON FRONT SIDE & SPROCKET ON BACK SIDE
C	SPROCKET ON FRONT SIDE & COLLAR ON BACK SIDE
D	COLLARS ON BOTH SIDES

REV

0

Model: LSC - T16925P Line Shaft Curve Conveyor Info

