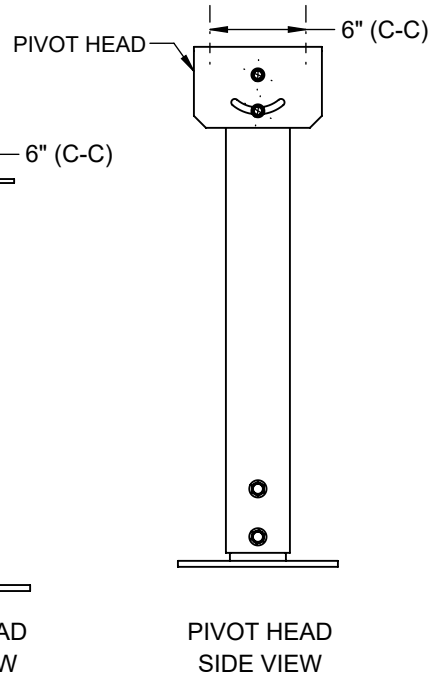
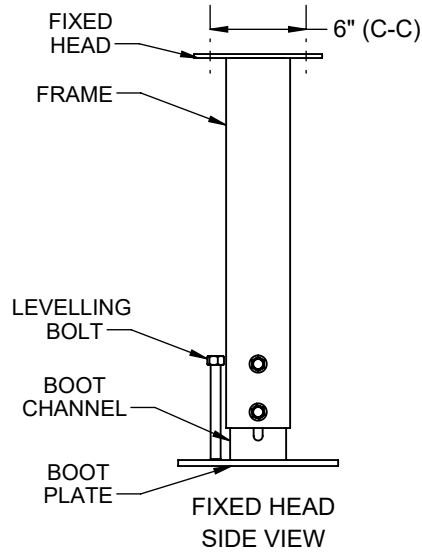
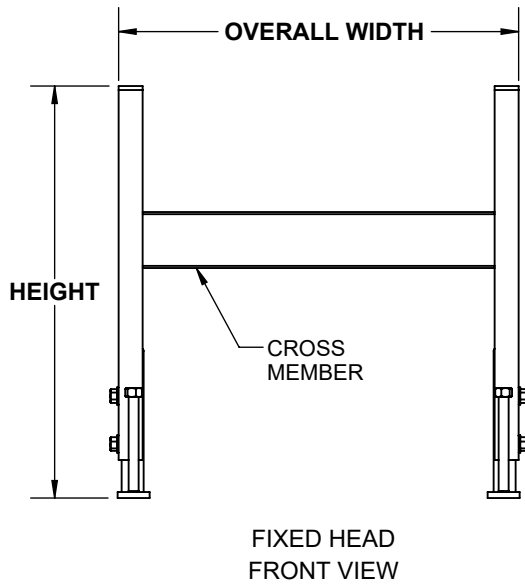
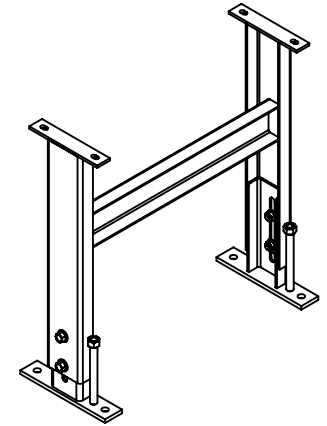


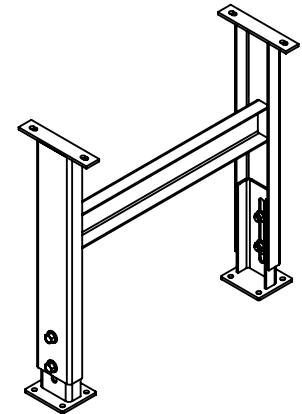
MODEL	MIN. HEIGHT	MAX. HEIGHT	OVERALL WIDTH
FIXED HEAD	11 1/4"	72"	BFR + 3"
PIVOT HEAD	15 1/2"	72"	BFR + 3 1/4"



HEAVY DUTY  
SUPPORT WITH  
FIXED BOOTS



HEAVY DUTY  
SUPPORT WITH  
CASTER BOOTS



NOTE:

SUPPORTS HEIGHT IS DESIGNED SPECIFICALLY TO THE CUSTOMER REQUEST WITH 1 1/2" MOVEMENT RANGE.

SPECIFICATIONS	
HEAD PLATE TYPE	PIVOT
BOOT PLATE TYPE	FIXED OR CASTER MOUNTING
BETWEEN FRAME RAILS (BFR)	1 1/2" TO 72"
MATERIAL	PLAIN CARBON STEEL
FINISH	INDUSTRIAL ENAMEL
CAPACITY	3000 LBS.

REV

0

Model: SH, Heavy Duty Support (General)

