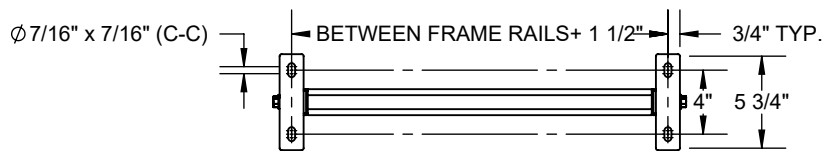
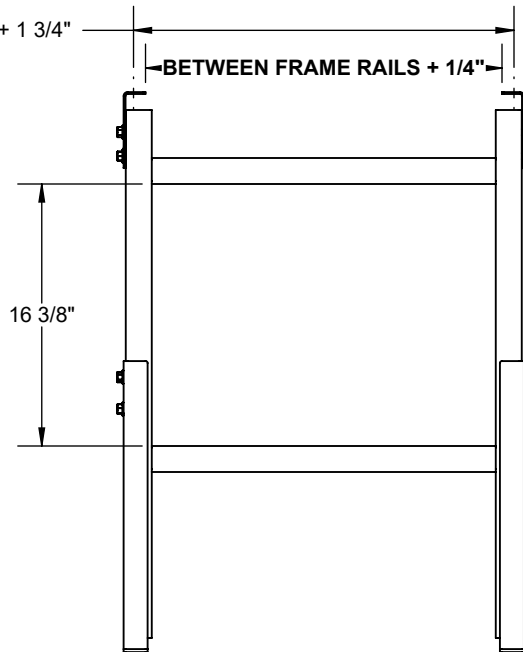
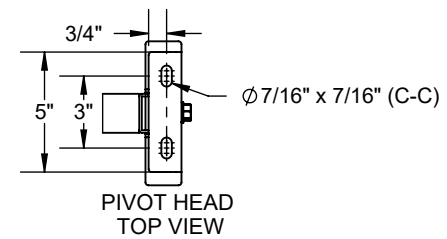
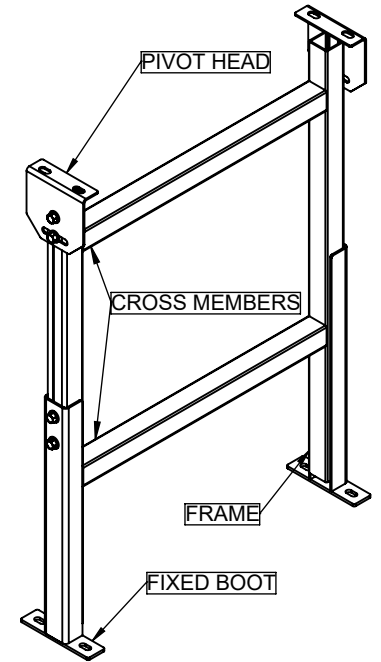
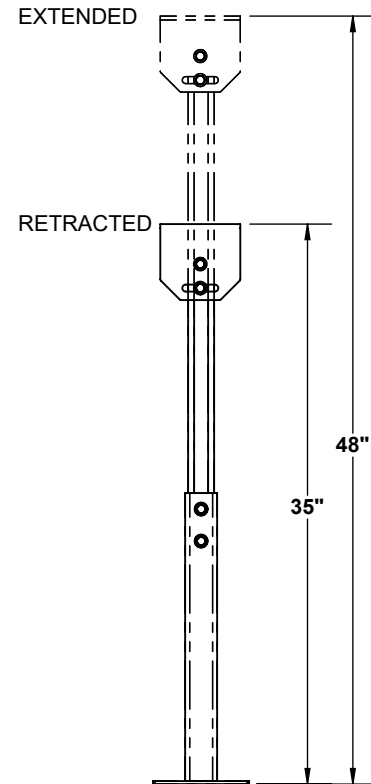


SPECIFICATIONS	
HEIGHT RANGE	35" TO 48"
BETWEEN FRAME RAILS (BFR)	1 1/2" TO 72"
HEAD PLATE TYPE	PIVOT
BOOT PLATE TYPE	FIXED, OPTIONAL CASTER MOUNTING
MATERIAL	PLAIN CARBON STEEL
FINISH	INDUSTRIAL ENAMEL
CAPACITY	1500 LBS.

SUPPORT HOLE CENTERS = BFR + 1 3/4"



HEIGHT RANGE



REV

0

Model: SR, 35-48 Regular Duty Support

