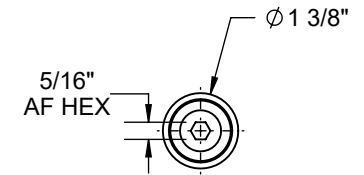
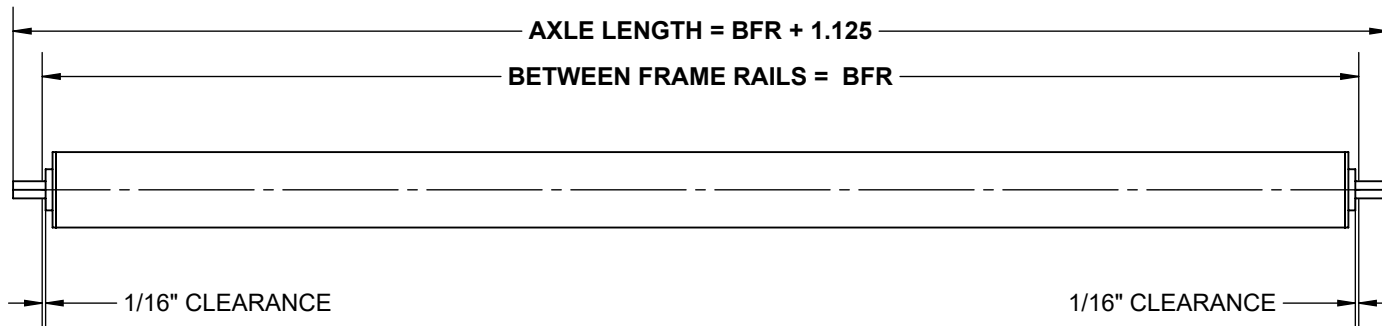
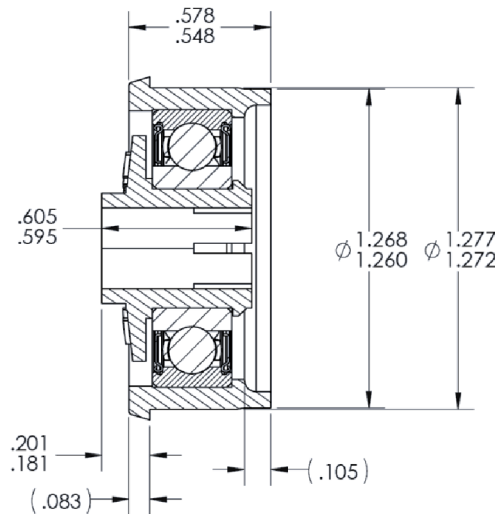


**SPECIFICATIONS**

<b>BETWEEN FRAME RAILS</b>	4" TO 27"
<b>ROLL CONSTRUCTION</b>	ROUND TUBE, 1 3/8" DIAMETER, 18 GAUGE
<b>BEARING TYPE</b>	PRECISION, POLYMER HOUSING, OILED, 5/16" HEX
<b>AXLE RETENTION</b>	STANDARD – SPRING LOADED ONE SIDE. OPTIONAL: COTTER PIN, FIXED PIN, LOOSE BOLT OR FIXED AXLE
<b>ROLLER SURFACE</b>	STANDARD GALVANIZED STEEL



**BEARING CROSS SECTION  
DETAILED VIEW**



RM-1296  
 LUBRICATION TYPE: OIL  
 LOAD RATING: 300 lbs.  
 TEMP. RATING: -4F to 150F  
 NOISE LEVEL: QUIET  
 STATIC DISCHARGE: YES, DIRECT INJECTION MOLDED

**STANDARD ROLLER  
CAPACITY CHART**

BFR [IN]	LOAD CAPACITY [LBS.]
4	300
6	182
9	115
12	84
15	66
18	54
21	46
24	40
27	35

REV

0

**Model: 1418HS, 1 3/8" Dia. - 18 Ga. Roller**

