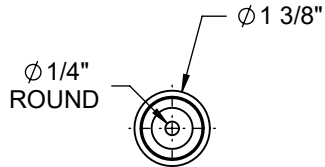
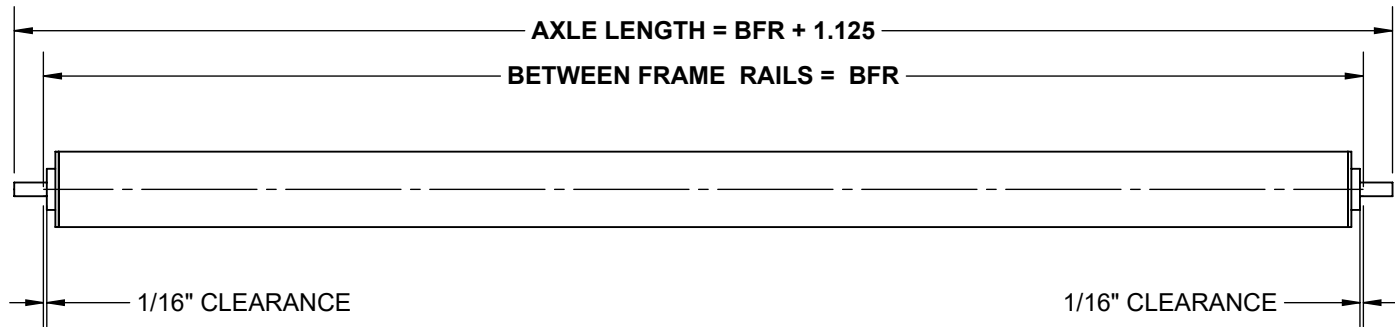
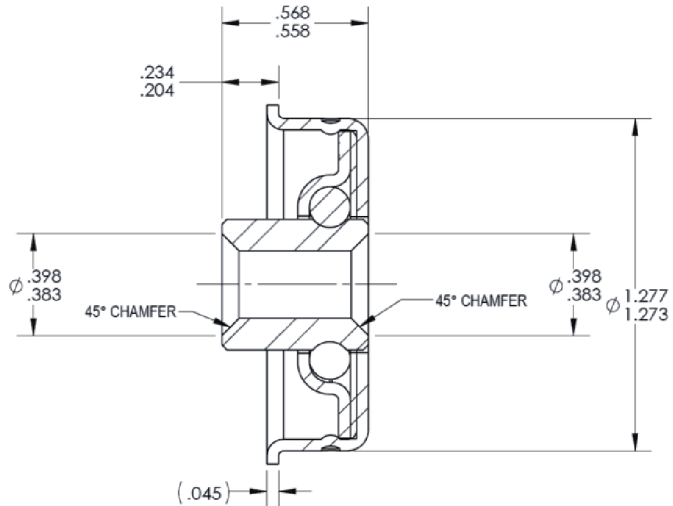


SPECIFICATIONS	
<b>BETWEEN FRAME RAILS</b>	4" TO 27"
<b>ROLL CONSTRUCTION</b>	ROUND TUBE, 1 3/8" DIAMETER, 18 GAUGE
<b>BEARING TYPE</b>	NON-PRECISION, ZINC PLATED STEEL HOUSING, OILED, 1/4" ROUND
<b>AXLE RETENTION</b>	STANDARD - SPRING LOADED ONE SIDE. OPTIONAL: FIXED AXLE OR SPEED NUT
<b>ROLLER SURFACE</b>	STANDARD GALVANIZED STEEL



BEARING CROSS SECTION  
DETAILED VIEW



RM-1277  
LUBRICATION TYPE: OIL  
LOAD RATING: 47 lbs.  
TEMP. RATING: -5F to 400F

STANDARD ROLLER CAPACITY CHART	
BFR [IN]	LOAD CAPACITY [LBS.]
4	85
6	
9	
12	73
15	57
18	47
21	40
24	35
27	31

REV	0	<b>Model: 1418R, 1 3/8" Dia. - 18 Ga. Roller</b>
-----	---	--

