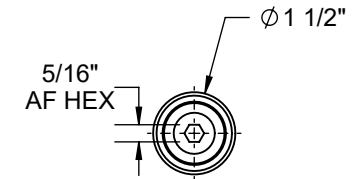
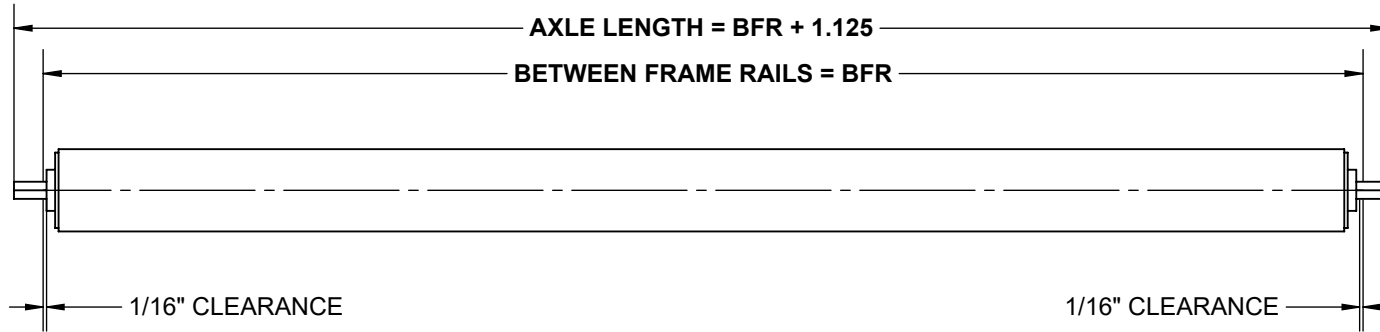
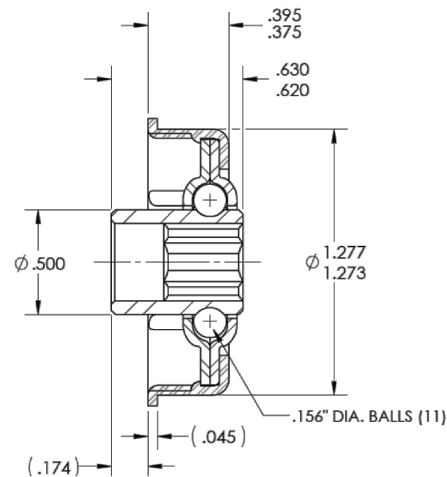


SPECIFICATIONS

BETWEEN FRAME RAILS	4" TO 24"
ROLL CONSTRUCTION	ROUND TUBE, 1 1/2" DIAMETER, 0.065" WALL THICKNESS
BEARING TYPE	NON-PRECISION, ZINC PLATED STEEL HOUSING, OILED, 5/16" HEX
AXLE RETENTION	STANDARD - SPRING LOADED ONE SIDE. OPTIONAL: COTTER PIN, FIXED BOLT, LOOSE BOLT OR FIXED AXLE
ROLLER SURFACE	6061 ALUMINUM TUBE



**BEARING CROSS SECTION
DETAILED VIEW**



RM-1276
LUBRICATION TYPE: OIL
LOAD RATING: 47 lbs.
TEMP. RATING: -10F to 400F

**STANDARD ROLLER
CAPACITY CHART**

BFR [IN]	LOAD CAPACITY [LBS.]
4 TO 24	65

REV

0

Model: 15065, 1 1/2" Dia. - 0.065" Wall Aluminum Roller

