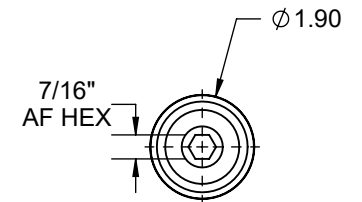
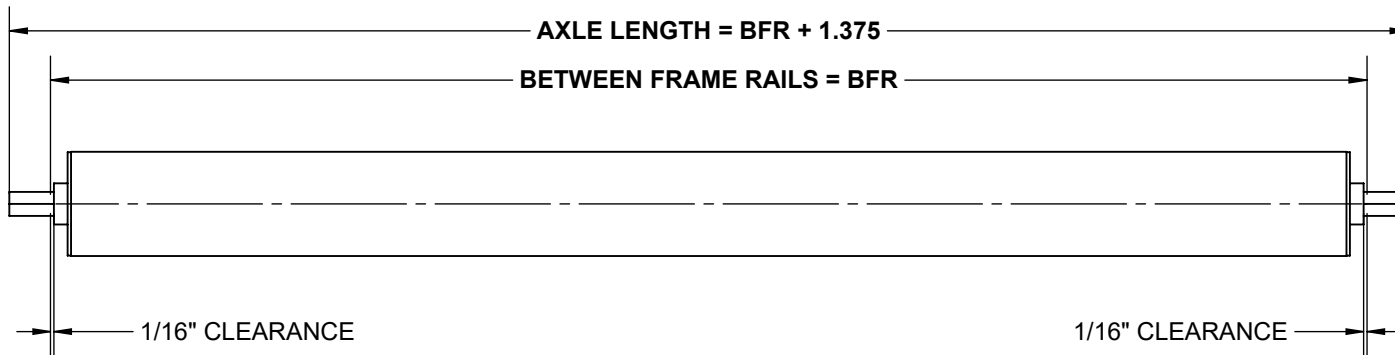
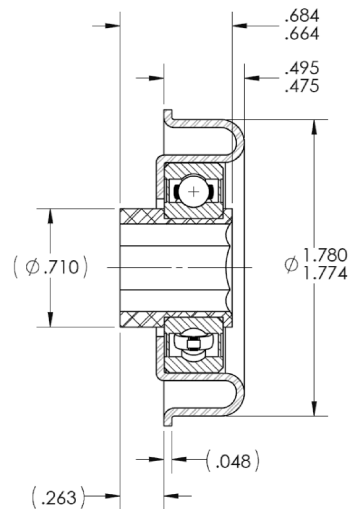


**SPECIFICATIONS**

<b>BETWEEN FRAME RAILS</b>	6" TO 48"
<b>ROLL CONSTRUCTION</b>	ROUND TUBE, 1.9" DIAMETER, 16 GAUGE
<b>BEARING TYPE</b>	PRECISION, ZINC PLATED STEEL HOUSING, GREASED, 7/16" HEX
<b>AXLE RETENTION</b>	STANDARD – SPRING LOADED ONE SIDE. OPTIONAL: COTTER PIN, FIXED PIN, LOOSE BOLT OR FIXED AXLE
<b>ROLLER SURFACE</b>	STANDARD GALVANIZED STEEL



**BEARING CROSS SECTION  
DETAILED VIEW**



**RM-4003**  
 LUBRICATION TYPE: GREASE  
 LOAD RATING: 300 lbs.  
 TEMP. RATING: -4F to 180F  
 NOISE LEVEL: QUIET  
 PROTECTION: RUBBER SEALS FRONT & BACK

**STANDARD ROLLER  
CAPACITY CHART**

BFR [IN]	LOAD CAPACITY [LBS.]
6	540
9	379
12	276
15	217
18	178
21	151
24	132
27	116
30	104
33	94
36	86
39	79
42	74
45	69
48	64

REV

0

**Model: 1916HS, 1.9" Dia. - 16 Ga. Roller**

