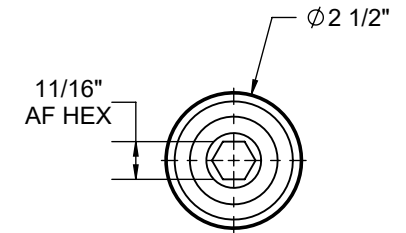
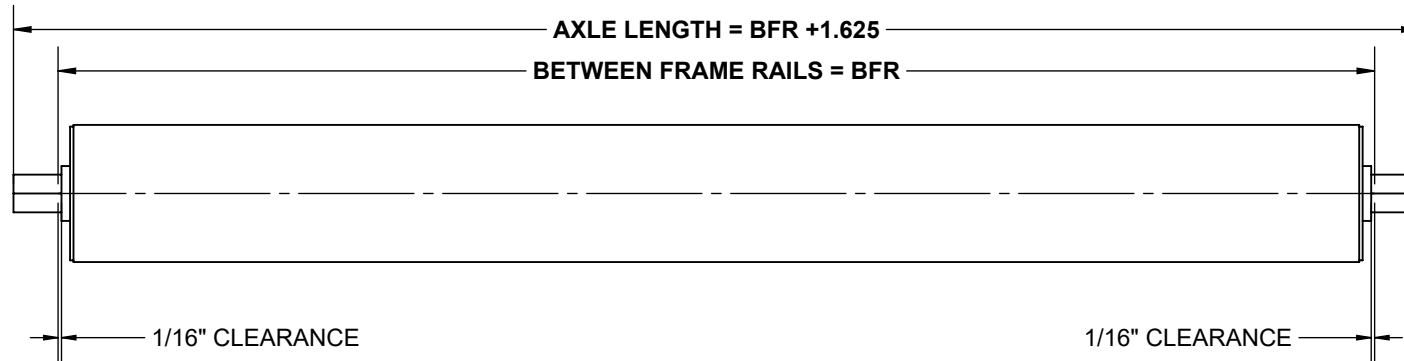


SPECIFICATIONS

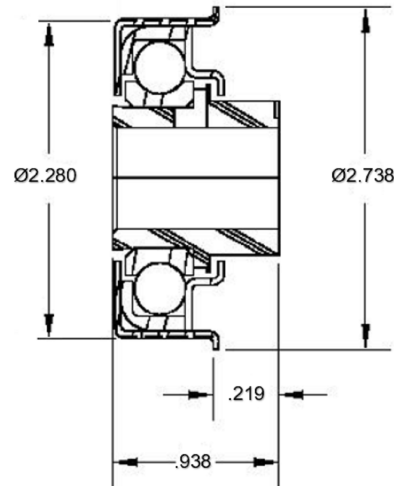
BETWEEN FRAME RAILS	8" TO 72"
ROLL CONSTRUCTION	ROUND TUBE, 2 1/2" DIAMETER, 11 GAUGE
BEARING TYPE	NON-PRECISION, ZINC PLATED STEEL HOUSING, GREASED, 11/16" HEX
AXLE RETENTION	STANDARD - SPRING LOADED ONE SIDE. OPTIONAL - COTTER PIN, FIXED BOLT, LOOSE BOLT OR FIXED AXLE
ROLLER SURFACE	STANDARD CARBON STEEL



STANDARD ROLLER CAPACITY CHART

BFR [IN]	LOAD CAPACITY [LBS.]
8	765
12	
15	
18	
21	
24	
27	
30	
33	
36	
39	
42	
45	
48	
51	
54	
57	
60	
63	
66	
69	751
72	719

BEARING CROSS SECTION DETAILED VIEW



RM-MEC-2280
 LUBRICATION TYPE: GREASE
 LOAD RATING: 425 lbs.
 TEMP. RATING: -20F to 300F

REV

0

Model: 2511C, 2 1/2" Dia. - 11 Ga. Roller

