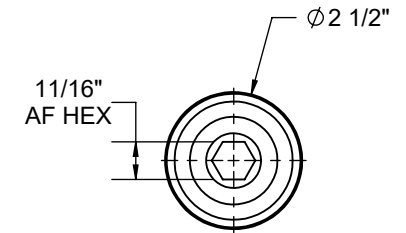
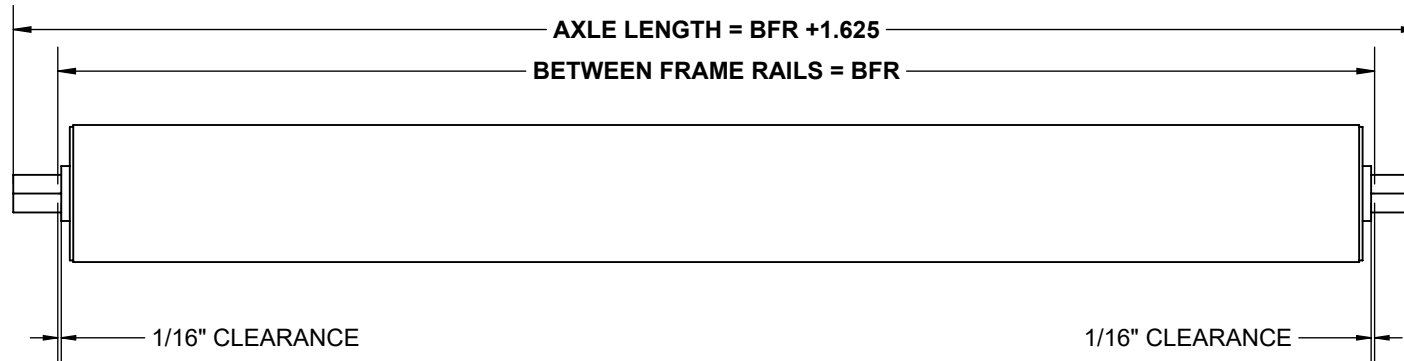
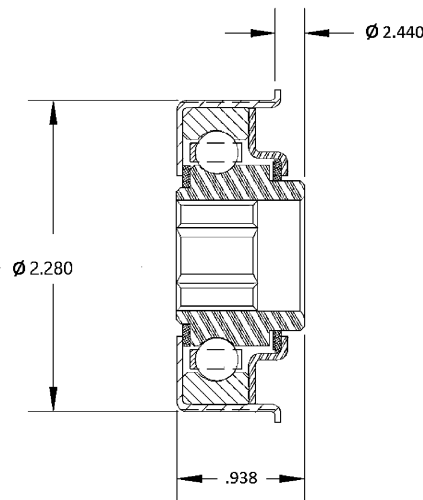


**SPECIFICATIONS**

<b>BETWEEN FRAME RAILS</b>	8" TO 72"
<b>ROLL CONSTRUCTION</b>	ROUND TUBE, 2 1/2" DIAMETER, 11 GAUGE
<b>BEARING TYPE</b>	SEMI-PRECISION, ZINC PLATED STEEL HOUSING, GREASED, 11/16" HEX
<b>AXLE RETENTION</b>	STANDARD - SPRING LOADED ONE SIDE. OPTIONAL - COTTER PIN, FIXED BOLT, LOOSE BOLT OR FIXED AXLE
<b>ROLLER SURFACE</b>	STANDARD CARBON STEEL



**BEARING CROSS SECTION  
DETAILED VIEW**



RM-MF-2511  
 LUBRICATION TYPE: GREASE  
 LOAD RATING: 425 lbs.  
 TEMP. RATING: -20F to 300F  
 PROTECTION: FRONT & BACK SEALS

**STANDARD ROLLER  
CAPACITY CHART**

BFR [IN]	LOAD CAPACITY [LBS.]
8	1000
12	
15	
18	
21	
24	
27	
30	
33	
36	
39	
42	
45	930
48	870
51	818
54	771
57	730
60	693
63	659
66	629
69	601
72	575

REV

0

**Model: 2511MG, 2 1/2" Dia. - 11 Ga Roller**

