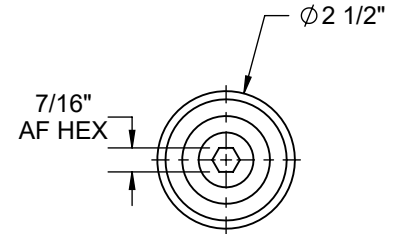
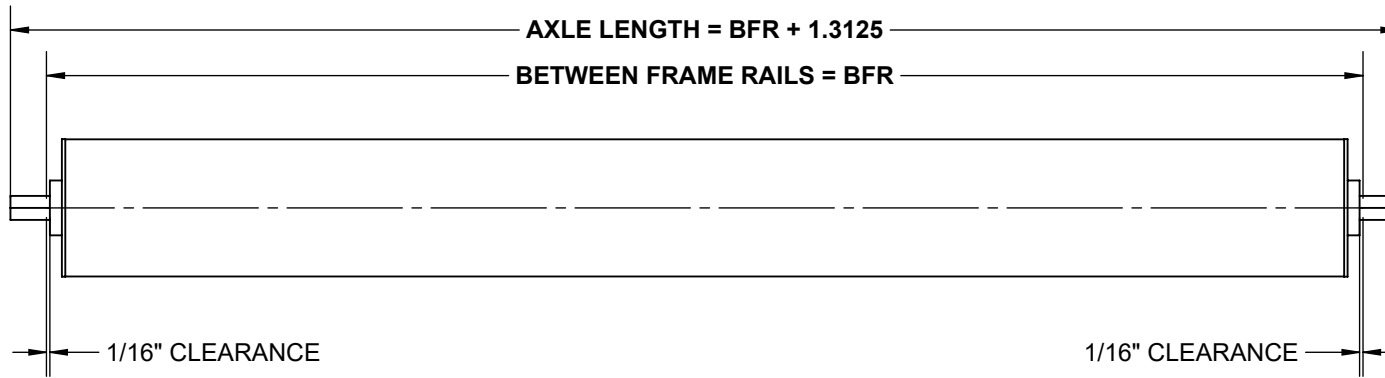
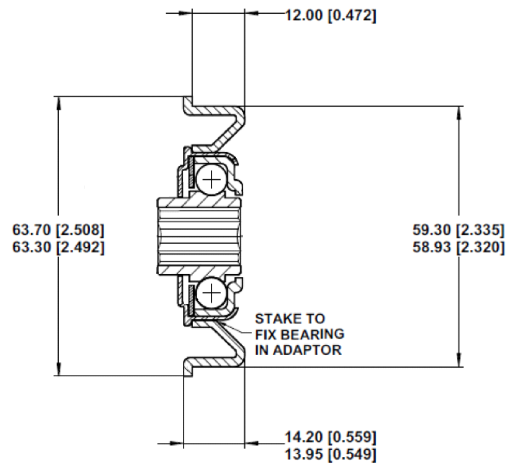


SPECIFICATIONS

BETWEEN FRAME RAILS	8" TO 54"
ROLL CONSTRUCTION	ROUND TUBE, 2 1/2" DIAMETER, 14 GAUGE
BEARING TYPE	NON-PRECISION, ZINC PLATED STEEL HOUSING, GREASED, 7/16" HEX
AXLE RETENTION	STANDARD - SPRING LOADED ONE SIDE. OPTIONAL: COTTER PIN, FIXED BOLT, LOOSE BOLT OR FIXED AXLE
ROLLER SURFACE	STANDARD GALVANIZED STEEL



**BEARING CROSS SECTION
DETAILED VIEW**



RM-CF2320
LUBRICATION TYPE: GREASE
LOAD RATING: 145 lbs.
TEMP. RATING: 10.4F to 212F

**STANDARD ROLLER
CAPACITY CHART**

BFR [IN]	LOAD CAPACITY [LBS.]
8	290
12	
15	
18	
21	
24	
27	279
30	
33	253
36	231
39	213
42	197
45	184
48	172
51	161
54	152

REV

0

Model: 2514, 2 1/2" Dia. - 14 Ga. Roller

