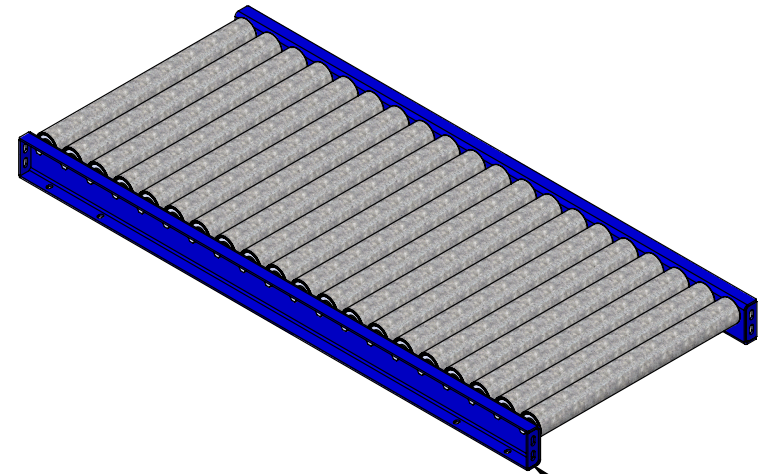
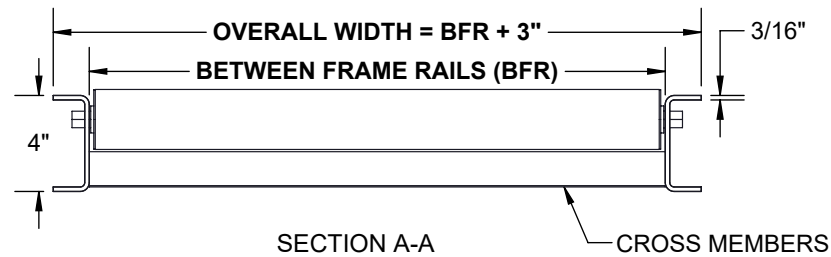
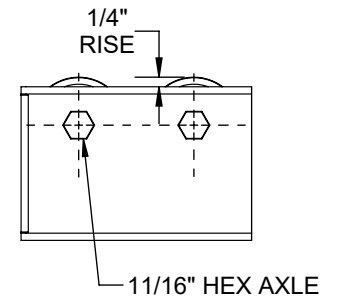
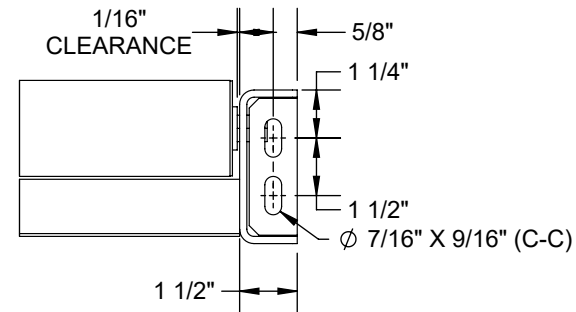
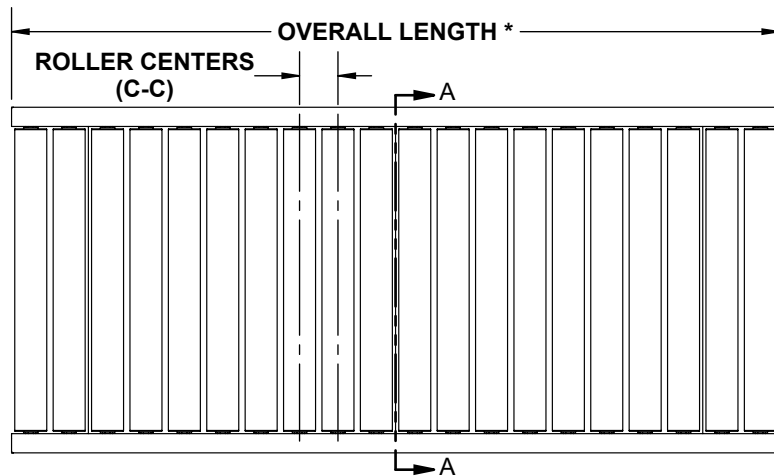


SPECIFICATIONS	
OVERALL LENGTH	12" TO 120"
OVERALL WIDTH	11" TO 57"
ROLLER CENTERS	3", 4", 4 1/2", 6", 9", 12"
BETWEEN FRAME RAILS	8" TO 54"
ROLLERS	2 1/2" DIA X 14 GA GALVANIZED STEEL - 11/16" HEX AXLE
BEARINGS	PRECISION, GREASED
SIDE CHANNELS	4" X 1 1/2" X 3/16"
CROSS MEMBERS	2" X 2" X 0.25"
FRAME MATERIAL	PLAIN STEEL
FINISH	INDUSTRIAL ENAMEL



BUTT COUPLING



NOTE:

*OVERALL LENGTH MUST BE DIVISIBLE BY SELECTED C-C.(NOT APPLICABLE FOR 4 1/2" C-C)

FOR 4 1/2" C-C, THE OVERALL LENGTH SUBTRACTED BY 3" MUST BE DIVISIBLE BY 4 1/2".

REV

0

Model: GR – 2514HS Gravity Roller Conveyor

