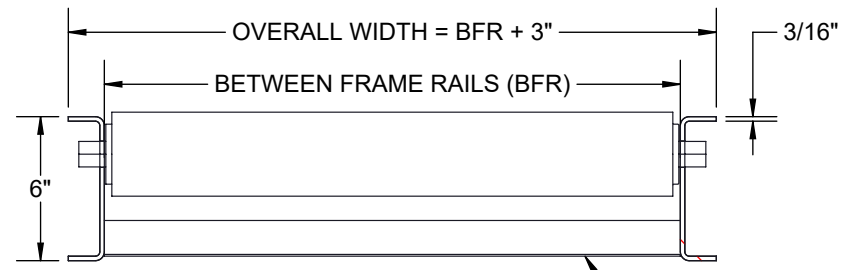
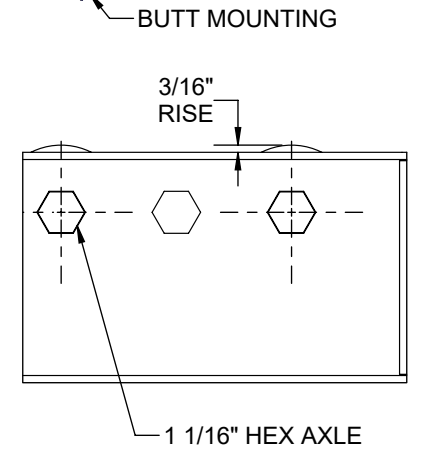
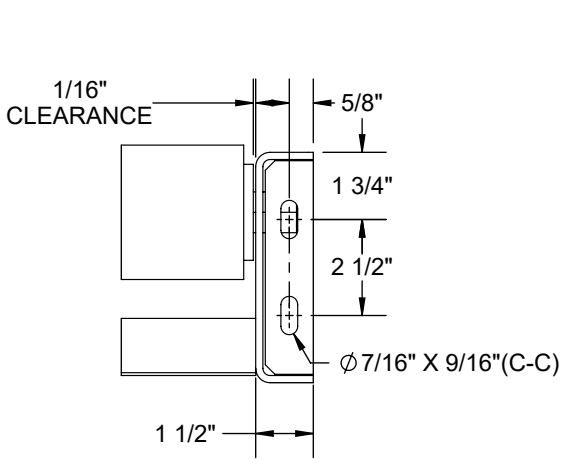
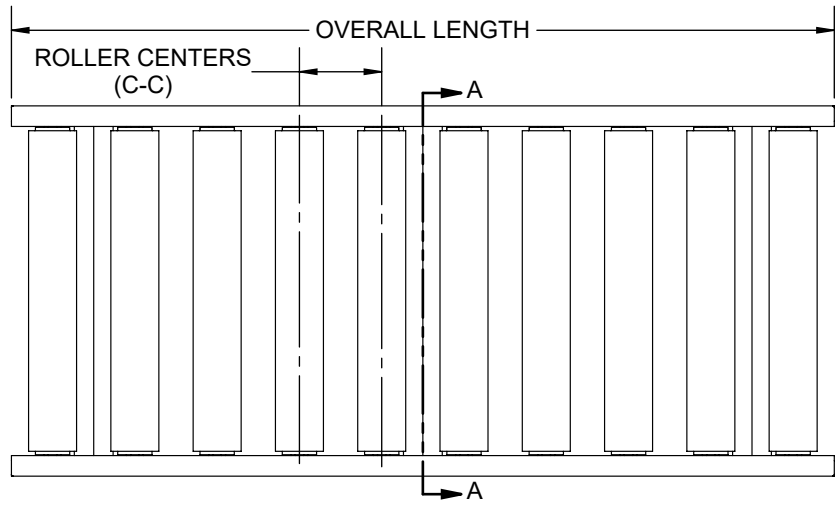
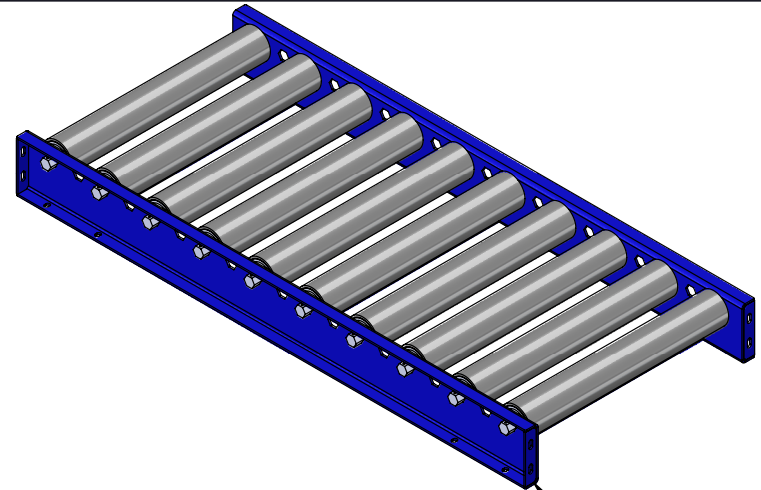


SPECIFICATIONS	
OVERALL LENGTH	12" TO 120"
OVERALL WIDTH	7" TO 75"
ROLLER CENTERS BETWEEN FRAME RAILS	6", 9", 12" 4" TO 72"
ROLLERS	3 1/2" Dia. X 0.250 WALL STEEL - 1 1/16" HEX AXLE
BEARINGS	NON-PRECISION, GREASED
SIDE CHANNELS	6" X 1 1/2" X 3/16"
CROSS MEMBERS	2" X 2" X 0.25"
FRAME MATERIAL	PLAIN STEEL
FINISH	INDUSTRIAL ENAMEL



SECTION A-A CROSS MEMBERS

REV	0	Model: GR – 3525 Gravity Roller Conveyor
-----	---	---

