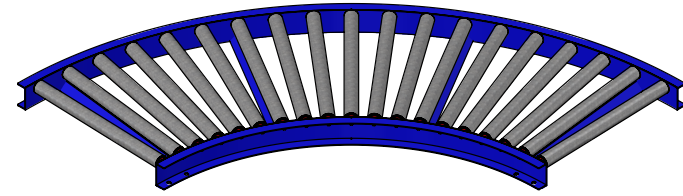
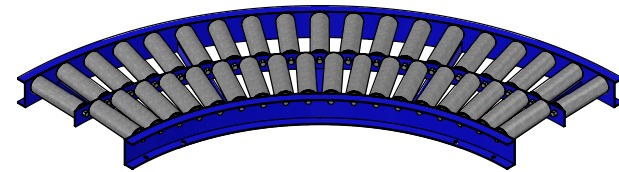


| SPECIFICATIONS | | | | |
|---------------------|--|-----|-----|-----|
| ANGLE (ϕ) | 90° | 60° | 45° | 30° |
| OVERALL WIDTH | 9" TO 51" | | | |
| INSIDE RADIUS | 36" | | | |
| ROLLER CENTERS | 2", 3", 4", 4 1/2", 6", 9", 12" | | | |
| BETWEEN FRAME RAILS | 6" TO 48" | | | |
| ROLLERS | 1.9" DIA X 16 GA GALVANIZED STEEL - 7/16" HEX AXLE | | | |
| BEARINGS | PRECISION, GREASED | | | |
| SIDE MEMBERS | 3 1/2" X 1 1/2" X 10 GA | | | |
| CROSS SUPPORTS | 1 1/2" X 1 1/2" X 3/16" | | | |
| FRAME MATERIAL | PLAIN STEEL | | | |
| FINISH | INDUSTRIAL ENAMEL | | | |

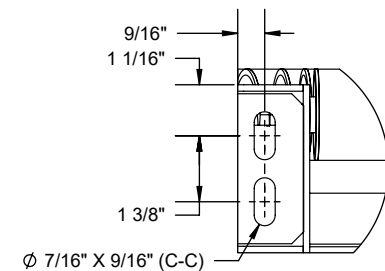
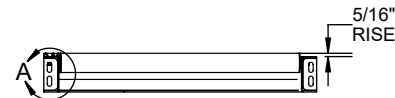
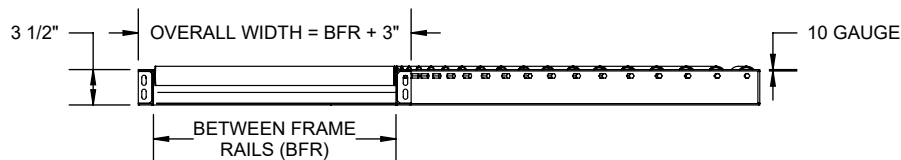
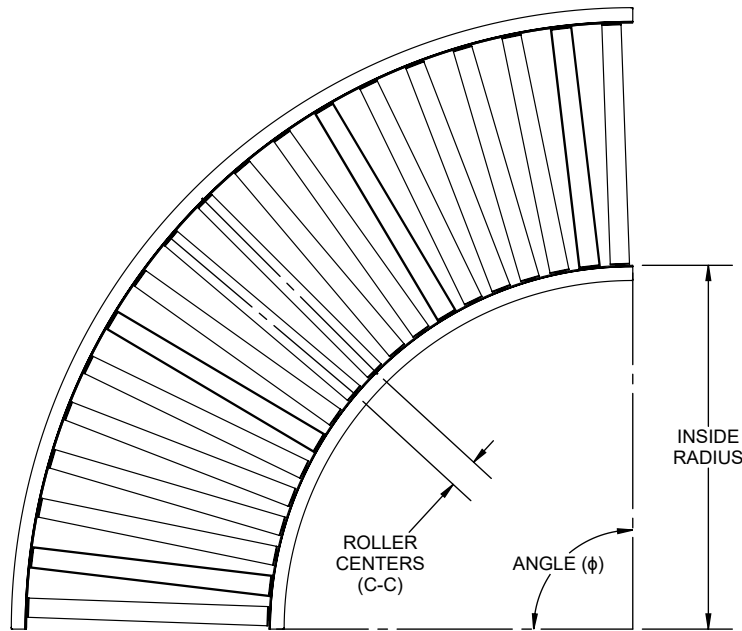
NOTE: OPTIONAL SPLIT LANE AVAILABLE TO MAINTAIN TRANSFERRED PACKAGE ORIENTATION.



REGULAR CURVED CONVEYOR



SPLIT LANE CURVED CONVEYOR



DETAIL A
SCALE 1 : 4

REV

0

Model: GRC – 1916HS Gravity Roller Curve Conveyor

