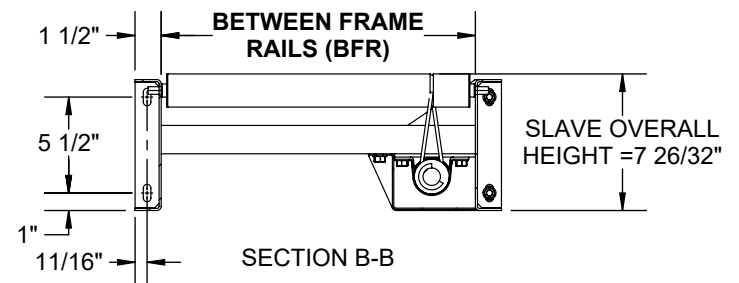
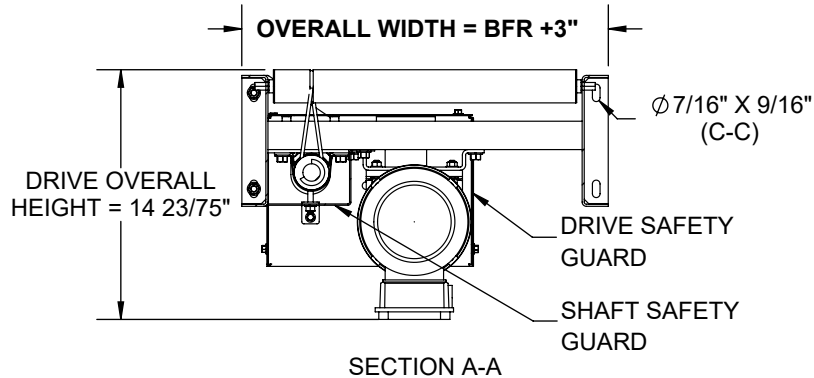
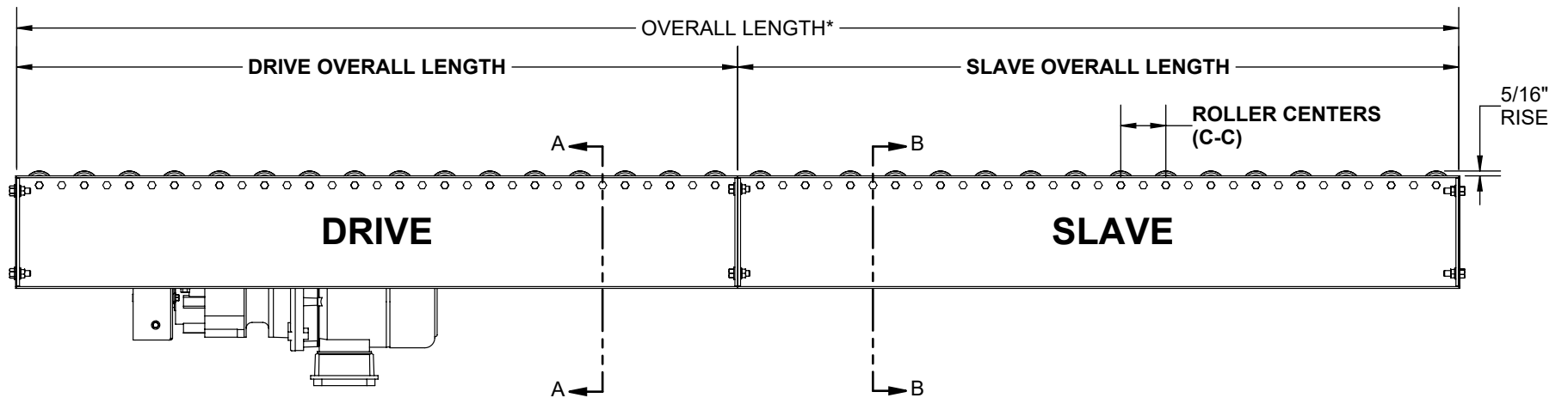
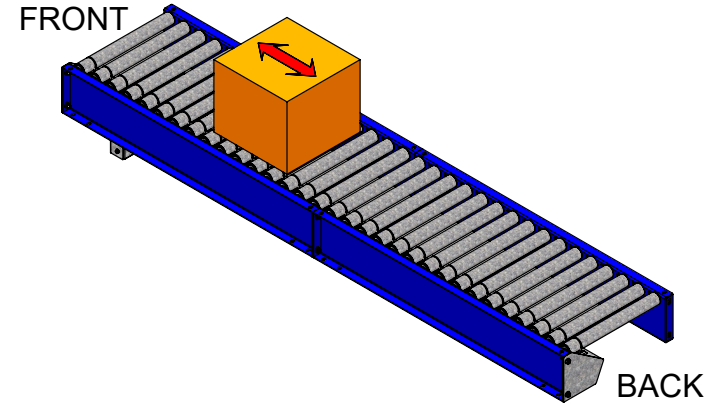


SPECIFICATIONS	
OVERALL LENGTH (DRIVE)	24" TO 120"
OVERALL LENGTH (SLAVE)	18" TO 120"
OVERALL WIDTH	15" TO 51"
ROLLER CENTERS (C-C)	3", 4 1/2", 6"
BETWEEN FRAME RAILS	12" TO 48"
LINE SPEED (FPM)	30 TO 120 (INCREMENT OF 10)
ROLLERS	1.9" DIA X 16 GA GALVANIZED STEEL - 7/16" HEX AXLE
BEARINGS	PRECISION, GREASED
SIDE CHANNELS	7 1/2" X 1 1/2" X 11 GA

NOTE:

\* MAXIMUM OVERALL LENGTH OF A RUN USING A SINGLE DRIVE IS 1200"



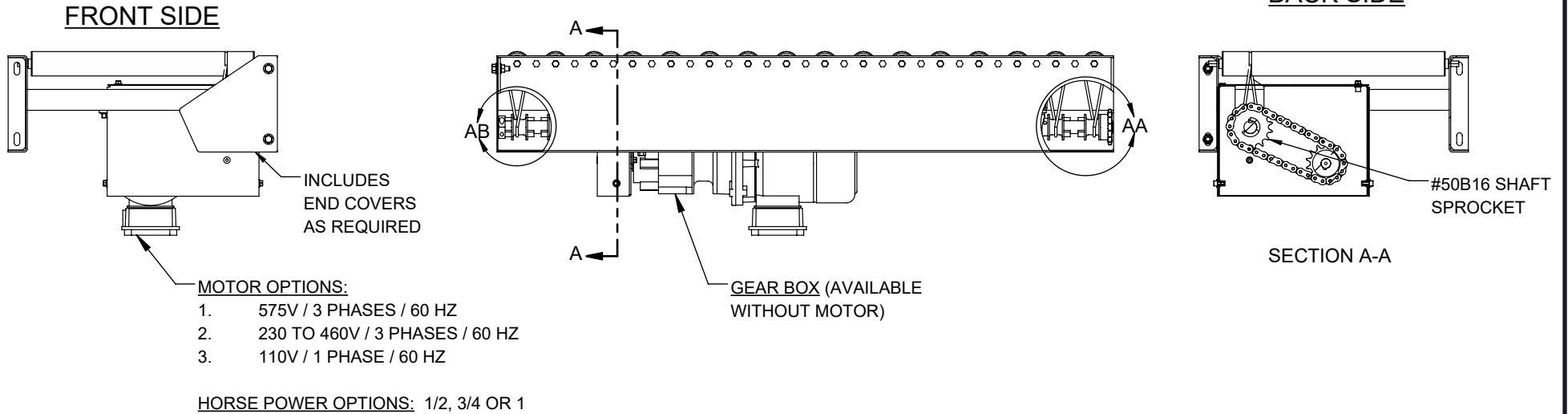
REV

0

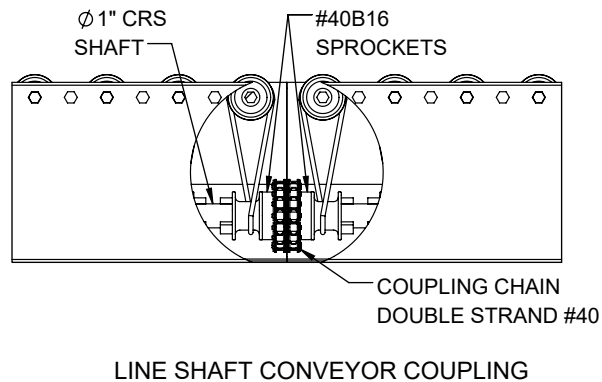
Model: LS - 1916HS Line Shaft Conveyor



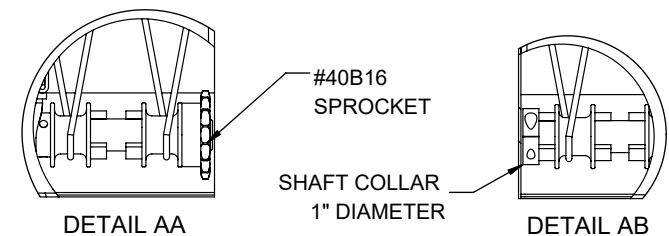
## 1.0 DRIVE CONVEYOR



## 2.0 DRIVE SHAFT



## 2.1 END CONNECTIONS



CONFIGURATION	PARTS ON SHAFT ENDS
A	SPROCKETS ON BOTH SIDES
B	COLLAR ON FRONT SIDE & SPROCKET ON BACK SIDE
C	SPROCKET ON FRONT SIDE & COLLAR ON BACK SIDE
D	COLLARS ON BOTH SIDES

REV

0

Model: LS - 1916HS Line Shaft Conveyor Info

