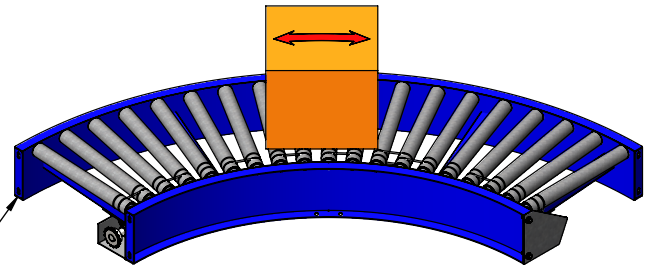
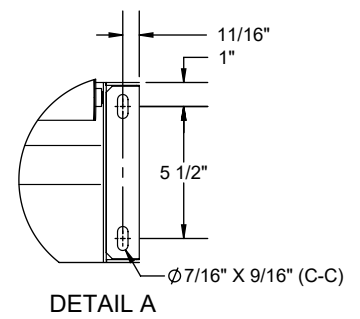
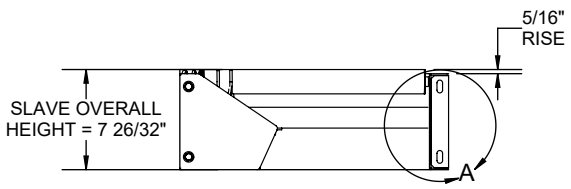
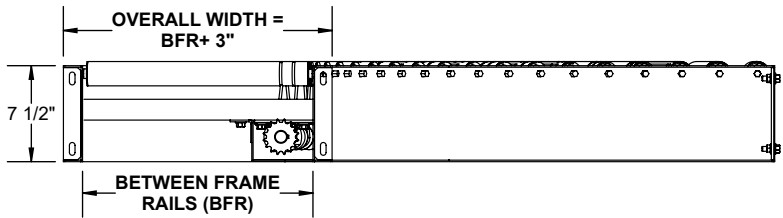
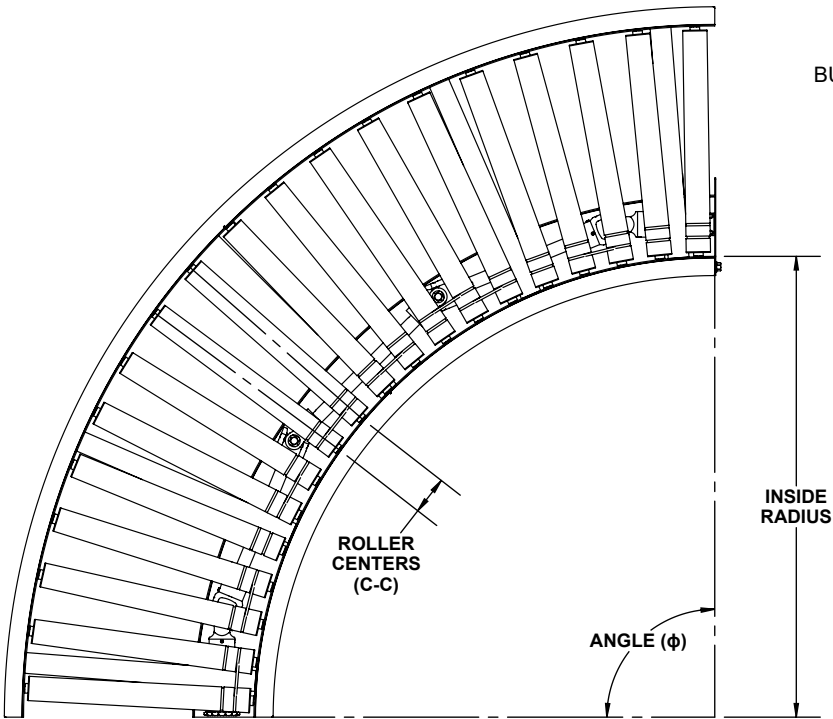


SPECIFICATIONS				
ANGLE ( $\phi$ )	90°	60°	45°	30°
OVERALL WIDTH	15" TO 51"			
INSIDE RADIUS	36"			
ROLLER CENTERS (C-C)	3"			
BETWEEN FRAME RAILS	12" TO 48"			
CONVEYOR SPEED (FPM)	30 TO 120 (INCREMENT OF 10)*			
ROLLERS	1.9" DIA X 16 GA GALVANIZED STEEL - 7/16" HEX AXLE			
BEARINGS	PRECISION, GREASED			
SIDE CHANNELS	7 1/2" X 1 1/2" X 11 GA			

NOTE: \*CONVEYOR SPEED IS BASED ON SELECTED DRIVE CONVEYOR MOTOR.



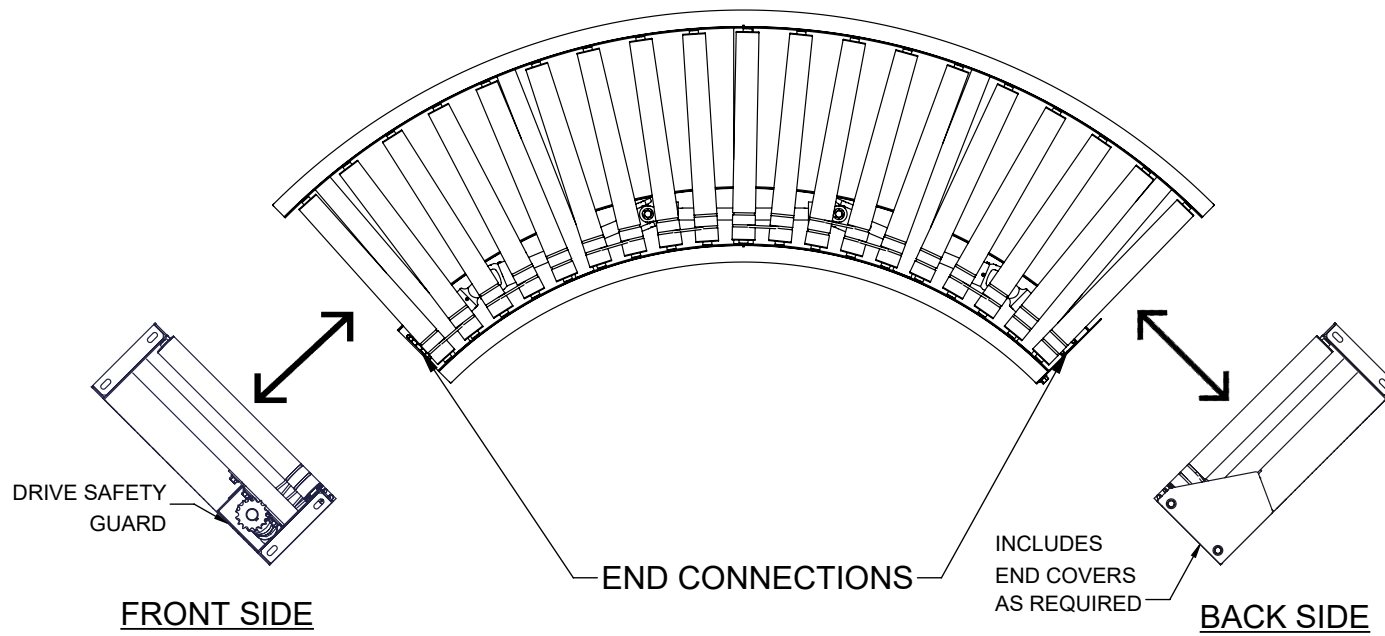
LINE SHAFT - SLAVE CURVED CONVEYOR



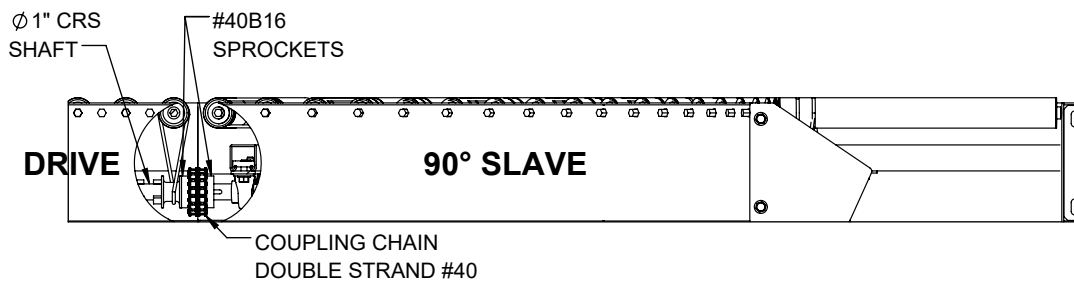
REV	0	<b>Model: LSC - 1916HS Line Shaft Curve Conveyor</b>
-----	---	--



# 1.0 SLAVE CONVEYOR

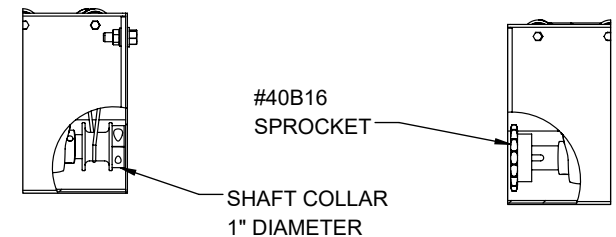


# 2.0 DRIVE SHAFT



LINE SHAFT CONVEYOR COUPLING

# 2.1 END CONNECTIONS



CONFIGURATION	PARTS ON SHAFT ENDS
A	SPROCKETS ON BOTH SIDES
B	COLLAR ON FRONT SIDE & SPROCKET ON BACK SIDE
C	SPROCKET ON FRONT SIDE & COLLAR ON BACK SIDE
D	COLLARS ON BOTH SIDES

REV

0

Model: LSC - 1916HS Line Shaft Curve Conveyor Info

