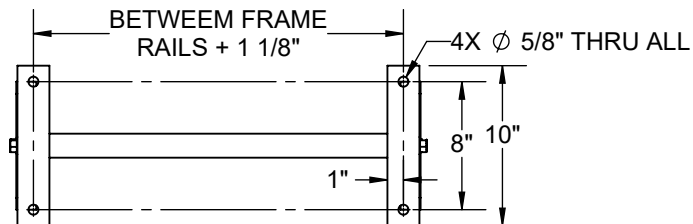
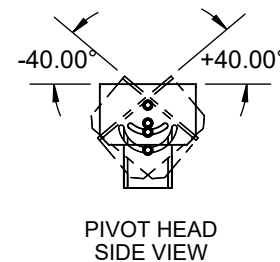
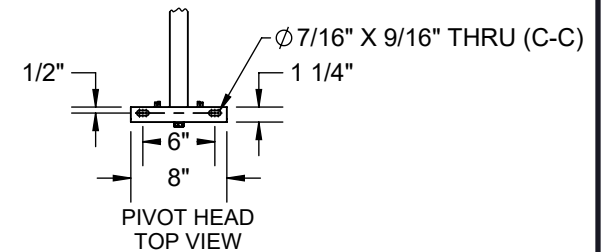
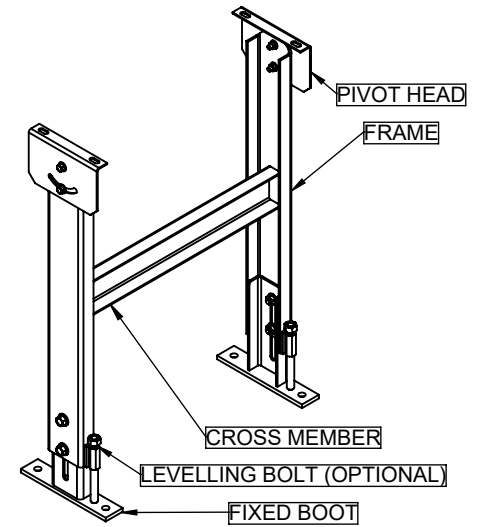
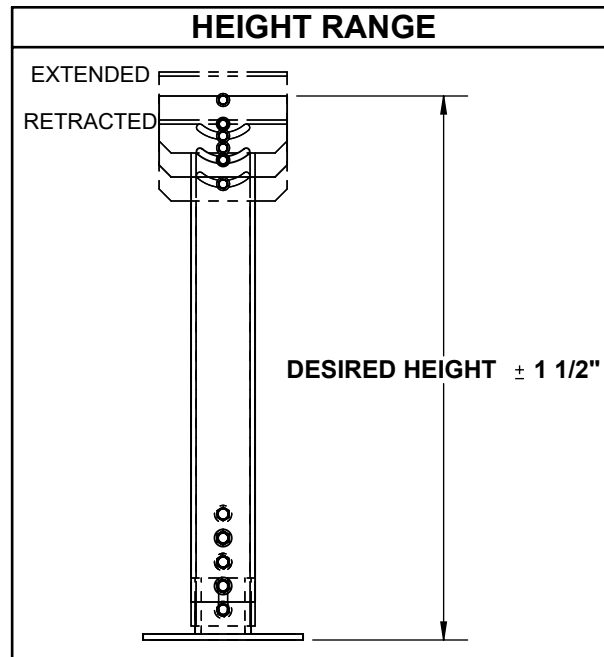
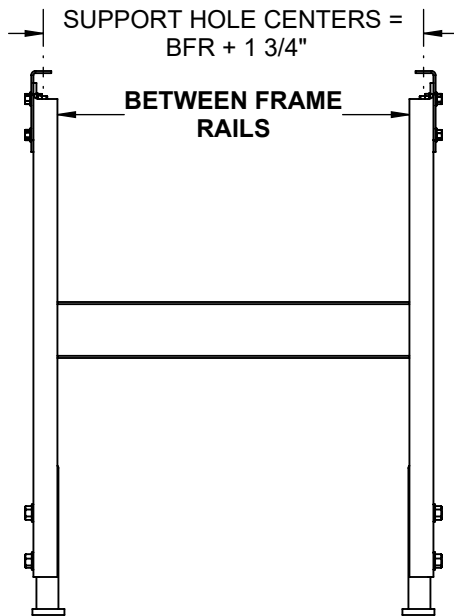


SPECIFICATIONS	
HEIGHT RANGE	DESIRED HEIGHT (15 1/2" TO 72") ± 1 1/2" ADJUSTMENT
BETWEEN FRAME RAILS (BFR)	1 1/2" TO 72"
HEAD PLATE TYPE	FIXED
BOOT PLATE TYPE	FIXED, OPTIONAL CASTER MOUNTING
MATERIAL	PLAIN CARBON STEEL
FINISH	INDUSTRIAL ENAMEL
CAPACITY	3000 LBS.



REV

0

Model: SH-P, Heavy Duty Support - Pivot Head

