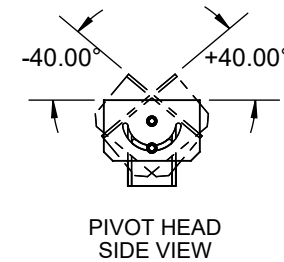
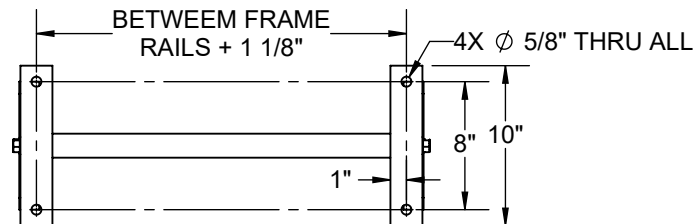
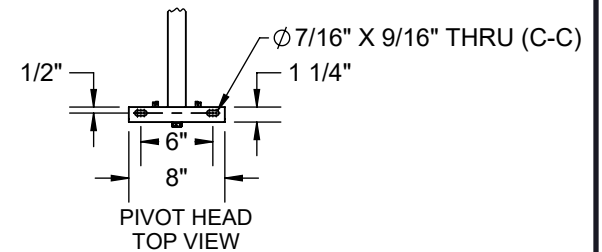
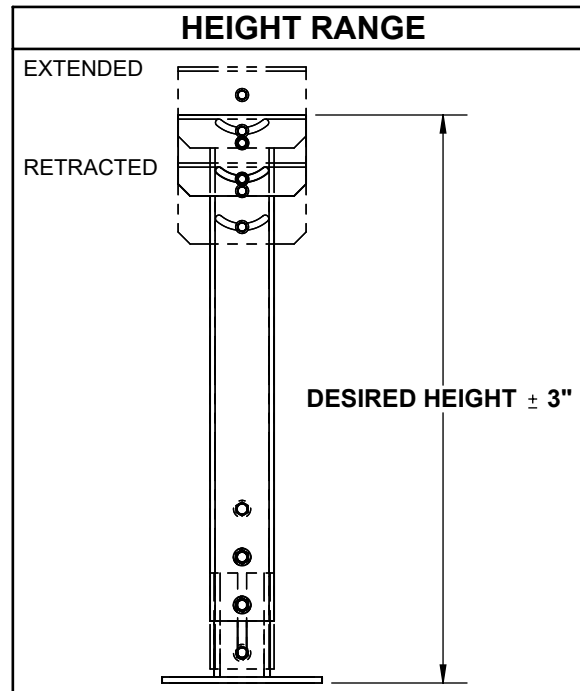
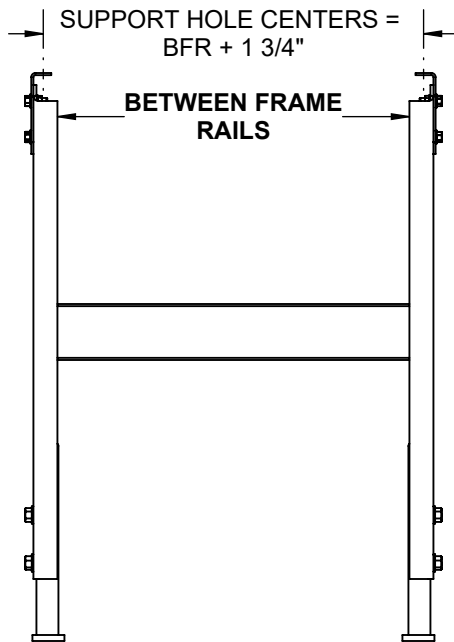
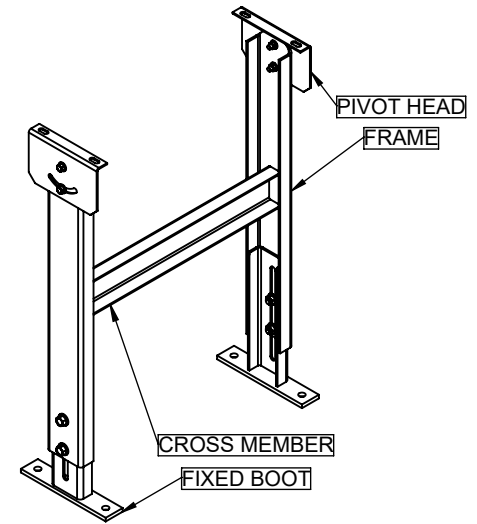


SPECIFICATIONS	
<b>HEIGHT RANGE</b>	DESIRED HEIGHT (18 1/2" TO 72") ± 3" ADJUSTMENT
<b>BETWEEN FRAME RAILS (BFR)</b>	1 1/2" TO 72"
<b>HEAD PLATE TYPE</b>	FIXED
<b>BOOT PLATE TYPE</b>	FIXED, OPTIONAL CASTER MOUNTING
<b>MATERIAL</b>	PLAIN CARBON STEEL
<b>FINISH</b>	INDUSTRIAL ENAMEL
<b>CAPACITY</b>	3000 LBS.



REV 0

**Model: SH-P, Heavy Duty Support - Pivot Head**

